

How To Determine Your Watch Strap Sizing

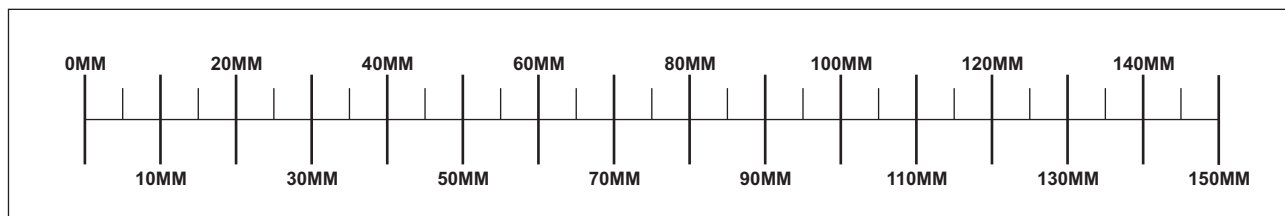
This guide MUST be printed to ensure accurate measurement

Instructions

1. Select "Print" from the file menu.
2. Important - Uncheck "shrink oversized pages to fit " or "scale to fit" boxes. Make sure to "scale at 100%".
3. After printing, test the accuracy of this page by measuring either the (Imperial) 2 inch test strip at the bottom of this sheet or the (Metric) strap length measuring tool below with a ruler.

Strap Length Measuring Tool

Lay each side of your current strap along this ruler to determine each sides length.



Lug Width Measuring Gauge

Position your watch's lugs over the boxes below to find your lug width size



16MM

17MM

18MM

19MM

20MM

21MM

22MM

23MM

24MM

25MM

26MM

27MM

28MM

Measure strip below from end to end to test for printing accuracy



2 inch strip test